



~ The Radio Wing ~
McCrae Road ~ Locking Parklands
Weston-super-Mare
BS24 7LZ
theradiowing@gmail.com



FACILITIES:-

Main Entrance/Exit on East Side of building, Automatic Door – push button/Accessibility access



Cloaks Area [Foyer]

Toilets – Female and Male/Accessibility with baby-changing unit



Information Boards – H & S; Activities; Information; Development Info

Main Hall – approx size = 9.1 m x 11.5 m

Furniture - Tables and Hall Chairs in both rooms

Fire Exit Doors - North side for external play area; South side outside patio

Store room – limited space

Internal Ramp – enabling accessibility access, leading to upper area of –

Toilets – Unisex and Accessibility with baby-changing unit



Kitchen – modern, well equipped, with oven, induction hob, microwave oven, 'fridge, kettles, tea-pots and flasks [hot & cold], dishwasher. Cleaning equipment and Hoover

Office – Private

Plant Room – No Access – kept secure for maintenance

Meeting Room – approx size = 5.8 m x 7.3 m. Carpet flooring. There are doors that can open to access both this room and the Main Hall areas simultaneously

South Side Entrance - single door entrance to access the Meeting room bookings



The building is well equipped with power sockets and effective central heating system..

Equipment:-

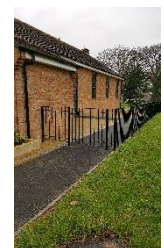
Notice Boards; Flip chart; Office tables = 3 and comfortable padded seat chairs = 15

Folding tables – 4 large oblong Formica and 6 low height Formica – child use

Chairs = 50 blue plastic – adult size; 20 green plastic – child size

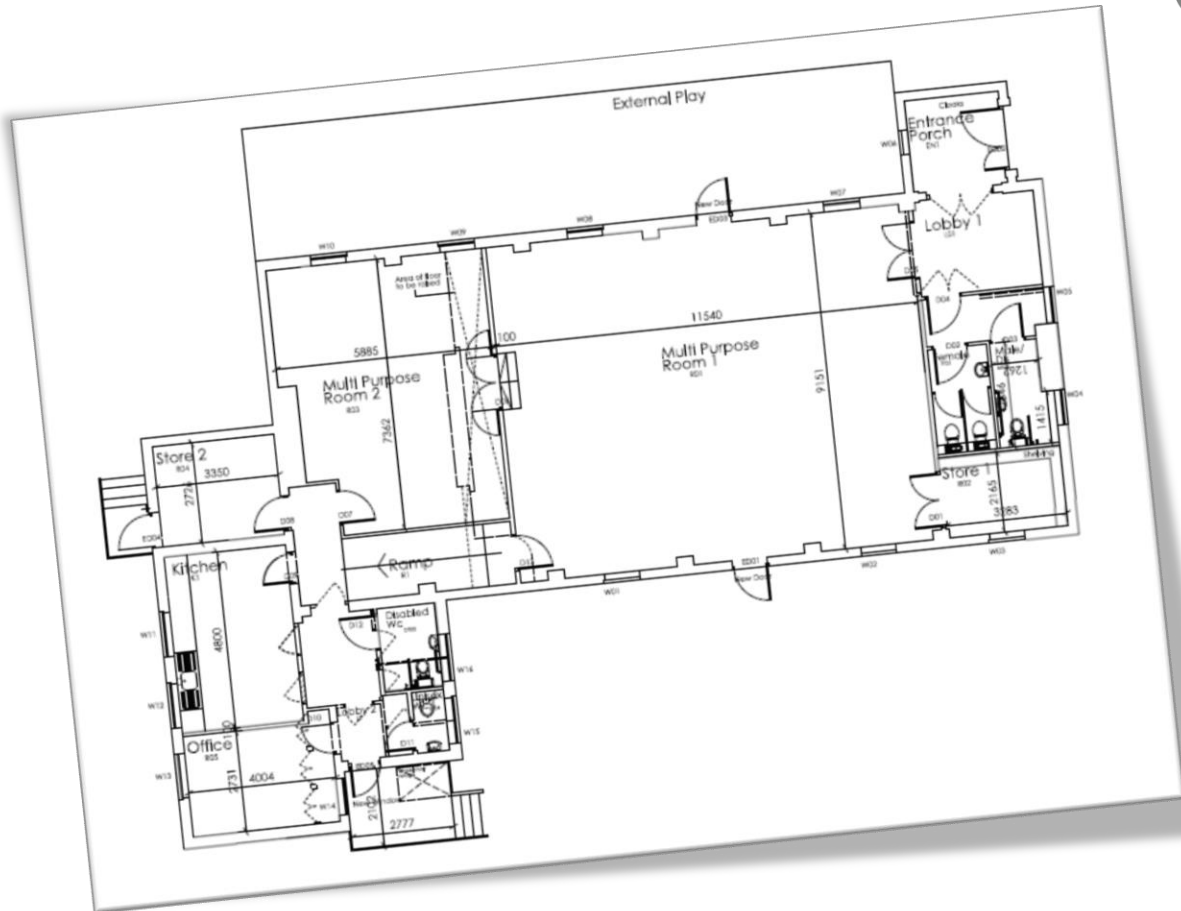


Outside Space – Attractive large Patio Areas providing areas for social, entertainment [South and East Side - [Spring/Summer time] and secure children's play area on the North Side. [Please note play equipment/toys are not provided.]





External – Parking for Cars, Motorcycles and Bicycle



**Please Note – In the interests of Health and Safety
The Radio Wing and grounds are a NO SMOKING ZONE**

**To enquire about a reservation – please contact
theradiowing@gmail.com**



Shadow Board
Locking Parklands Community Interest Company
lpshadic@gmail.com

© E & O E

Co Registration No: 07952707